



## DIMENSIONI • DIMENSIONS



	1	2	3	4	5	6	M
	2,10 x 3,20	3,20 x 3,20	4,30 x 3,20	2,10 x 4,70	3,20 x 4,70	4,30 x 4,70	
	5000 kg	3500 kg	3500 kg	5000 kg	3500 kg	3500 kg	M
	+4900 kg	+3400 kg	+3400 kg	+4900 kg	+3400 kg	+3400 kg	PM
	+4800 kg	+3300 kg	+3300 kg	+4800 kg	+3300 kg	+3300 kg	
	+4700 kg	+3200 kg	+3200 kg	+4700 kg	+3200 kg	+3200 kg	
	+4600 kg	+3100 kg	+3100 kg	+4600 kg	+3100 kg	+3100 kg	
	+4500 kg	+3000 kg	+3000 kg	+4500 kg	+3000 kg	+3000 kg	
	+4400 kg	+2900 kg	+2900 kg	+4400 kg	+2900 kg	+2900 kg	
	+4300 kg	+2800 kg	+2800 kg	+4300 kg	+2800 kg	+2800 kg	
	+4200 kg	+2700 kg	+2700 kg	+4200 kg	+2700 kg	+2700 kg	

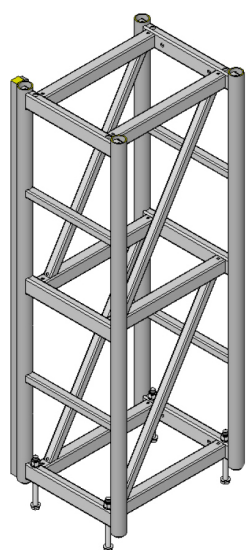
## DATI TECNICI • TECHNICAL DATA



Capacità di carico	Capacity	Charge Nominale	Capacidad de carga	5000 kg	5000 kg
Velocità di sollevamento	Lifting speed	Vitesse de lévage	Velocidad de elevación	12 m/min	20/30 m/min
Massima altezza ancorata	Max anchored height	Hauter max avec ancrages	Altura max con anclajes	220 m	220 m
Dimensioni interne cesta	Internal platform dimensions	Dimensions intérieures du plancher	Dimensiones internas de cabina	1 2,10 x 3,20 2 3,20 x 3,20 3 4,30 x 3,20 4 2,10 x 4,70 5 3,20 x 4,70 6 4,30 x 4,70	1 2,10 x 3,20 2 3,20 x 3,20 3 4,30 x 3,20 4 2,10 x 4,70 5 3,20 x 4,70 6 4,30 x 4,70
Tensione alimentazione	Input power range	Tension d'alimentation	Tensión de red	230/400 V-50 Hz 275/480 V-60 Hz	230/400 V-50 Hz 275/480 V-60 Hz
Interruttore protezione linea	Protection switch	Interrupteur de protection	Interruptor de protección	50 A	50 A
Potenza servizio continuo	Power of the motors	Puissance des moteurs	Potencia de motorreductores	4 x 5,5 kW	6 x 5,5 kW
Minima potenza di linea consigliata	Minimum line power suggested	Min. puissance de ligne conseillée	Min. potencia linea	30 kW	40 kW
Peso unità base	Base unit weight	Poids unité de base	Peso unidad de base	1 4700 kg 2 5200 kg 3 5350 kg 4 5650 kg 5 6050 kg 6 6350 kg	1 4700 kg 2 5200 kg 3 5350 kg 4 5650 kg 5 6050 kg 6 6350 kg
Ingrassatore automatico cremagliera	Rack automatic greasing pump	Graisser automatique de cremallere	Engrasador automatico de cremallera	✓	✓
Sistema di sovraccarico	Overload system	Limiteur de charge	Limitador de carga	✓	✓



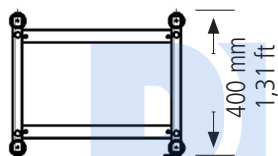
## COLONNA • MAST



1458 mm / 4,78 ft

COMPATIBILE CON:  
INTERCHANGEABILITY:

ELSA PM-M23  
ELSA H20  
ELSA P46



400 mm  
1,31 ft

500 mm  
1,64 ft

72 kg  
158,73 lb



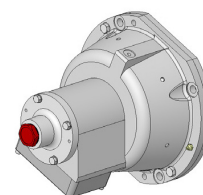
## CARATTERISTICHE • FEATURES

MASSIME SOLLECITAZIONI GRAVANTI SUL BASAMENTO A PIENO CARICO  
MAXIMUM LOAD WEIGHING ON THE BASE AREA BY FULL MOVING LOADED UNIT

Height (m) Altezza (m)	n° mast sections n° sezioni colonne	F [daN]	P [MPa]
10	7	21227	4,6963
20	14	21763	4,8148
30	21	22298	4,9333
40	28	22834	5,0517
50	35	23369	5,1702
60**	42	23905	5,2886
70	49	24440	5,4071
80	55	24899	5,5086
90	62	25435	5,6271
100	69	25970	5,7456
150	103	28571	6,3210
160	110	29106	6,4394

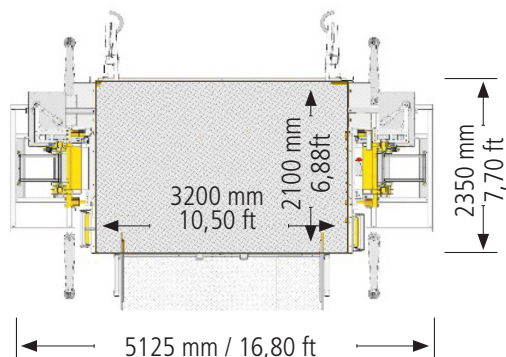
\*\*Per macchine installate ad una altezza maggiore di 50 m il basamento deve poggiare direttamente a terra.

\*\*For machines with installations for heights greater than 50 m the base must always be placed on the ground.

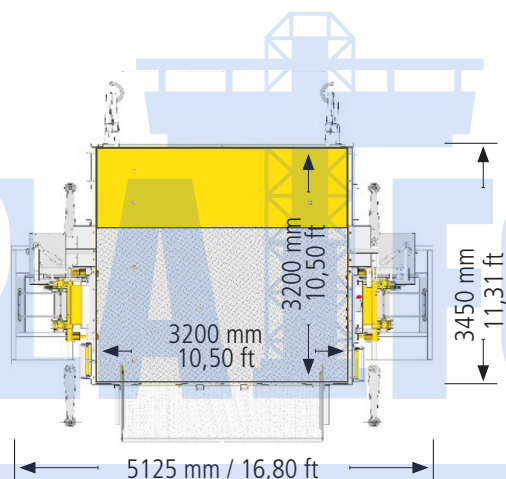


Freno di emergenza ad arresto progressivo

Overspeed safety device with progressive stop

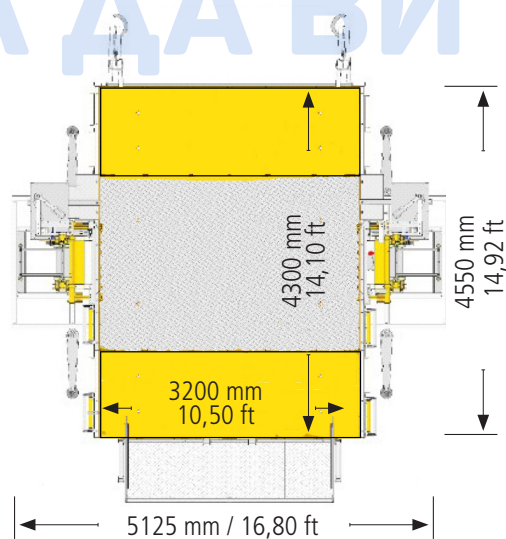


1 2,10 x 3,20 m - 5000kg  
6,88 x 10,50 ft - 11023 lb

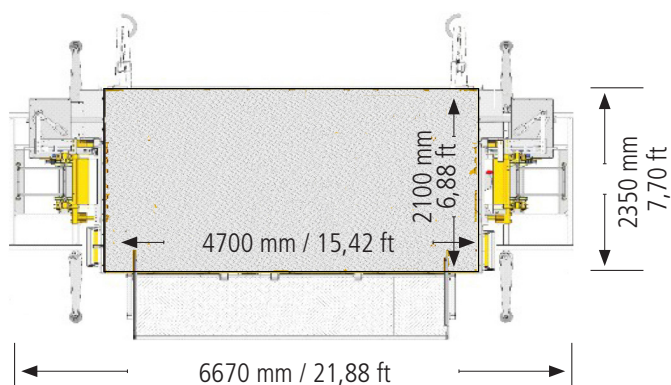


2 3,20 x 3,20 m - 3500kg  
10,50 x 10,50 ft - 7716 lb

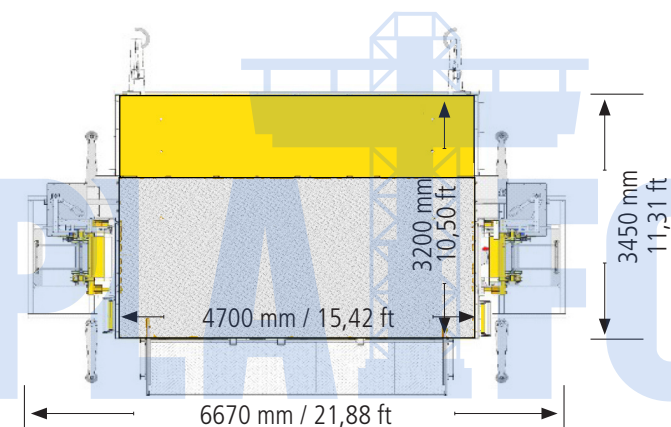
ЗА ДА ВИ Е ЛЕСНО



3 4,30 x 3,20 m - 3500kg  
14,10 x 10,50 ft - 7716 lb

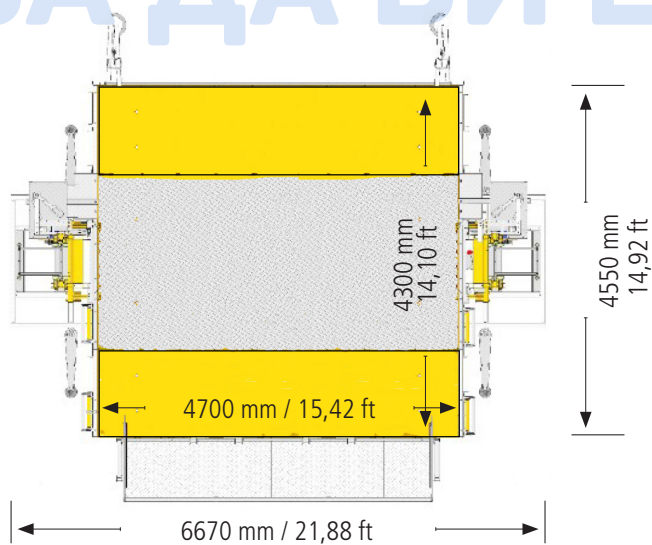


4 2,10 x 4,70 m - 5000kg  
6,88 x 15,42 ft - 11023 lb



5 3,20 x 4,70 m - 3500kg  
10,50 x 15,42 ft - 7716 lb

## ЗА ДА ВИ Е ЛЕСНО



6 4,30 x 4,70 m - 3500kg  
14,10 x 15,42 ft - 7716 lb